

### LEGEND

	Catch Basin		Power Pole
	Sewer Manhole		Light Pole
	Water Valve		Drive-thru Arrows
	Power Lines		Asphalt
	Fence		Grass
	CL Road		Concrete
	Water Line		Steel Roof
	Sewer Line		Cable Box
	Shingle Roof		Field
	Telephone Box		No Parking

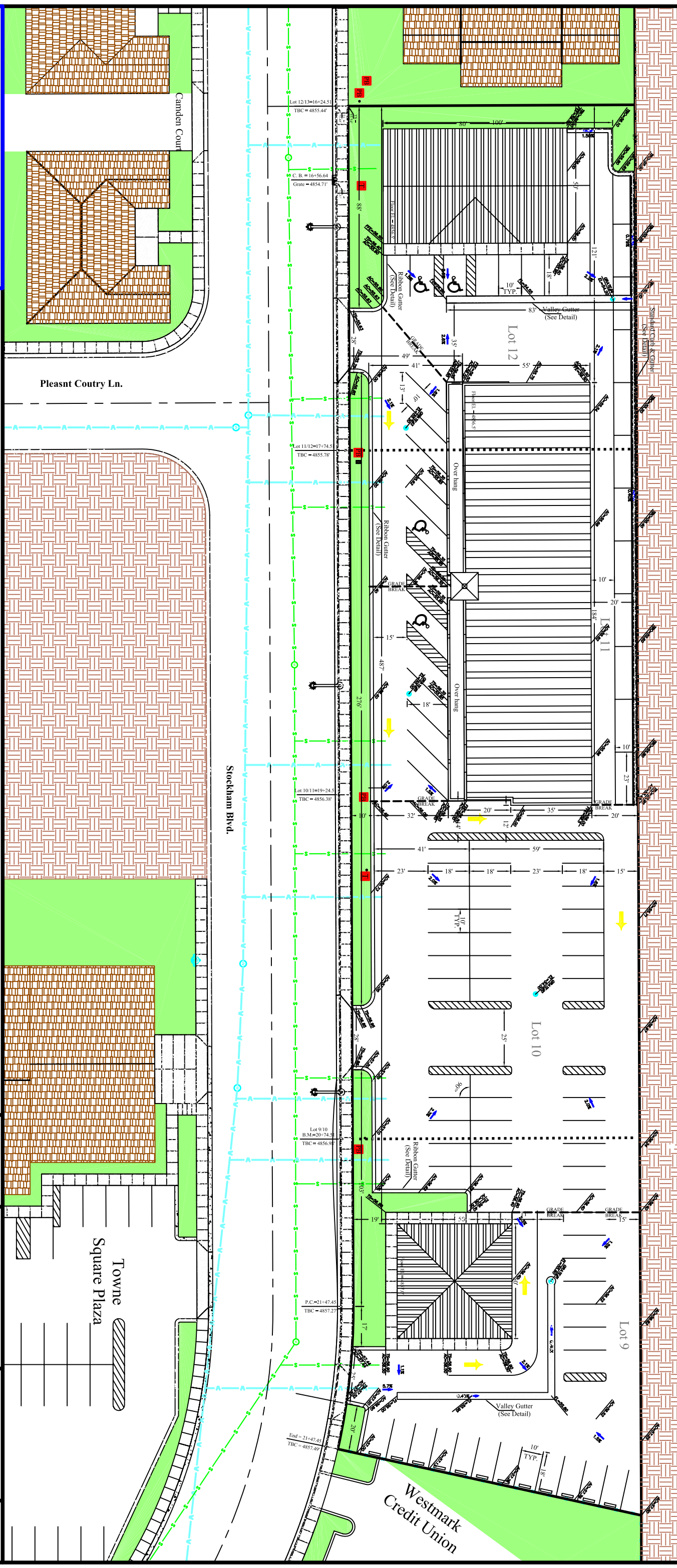
### NOTES

**Landscaping Requirements:**  
 Total Lot Area = 75,212 sq ft  
 Requirements: 8% of Lot Area = 6,017 sq ft  
 Provided: 5% = 6,999 sq ft

**Setbacks Requirements:**  
 This Project:  
 Side Yard: 10' Min.  
 Front Yard: 10' Min.  
 Back Yard: 15' Public, Thoroughfare Back Yard: 20' Min.

**Parking Requirements:**  
 City Requirements: 1 space/200 sq ft floor area for restaurants.  
 Total Floor Area: 16554 sq ft  
 Spaces Required: 83 Parking Spaces  
 Spaces Provided: 90 Parking Spaces

**Notes:**  
 1. All Concrete shall be cured with a curing compound as specified in the Standard Specifications or as directed by the City Engineer.  
 2. Sitework, geometry, shall comply with the following or as approved by the City Engineer:  
 A. Max. slope on handicap curb ramps shall be 1:12 (vert. :horiz.)  
 B. Max. cross slope shall be 2% on sidewalks except in drop-offs with the sidewalk adjacent to the curb and transition to ramps.  
 C. 3-4 inches of 3/4" coarse aggregate base shall be required under all concrete where unsuitable base material is encountered. If fill material is required, or where directed by City Engineer.



Division No. 3 Rigby Town Square Lots 9-12  
 South Fork Plaza Site Plan

Date: September 27, 2006  
 Drawn By: TSG  
 Project No: 2006-90  
 Revisions: 3

Scale: Horizontal: 1" = 20'  
 Vertical: NA

Page No: 1 of 1

Professional Engineer Seal: 105663, State of Idaho, L.L.L., L.L.L., L.L.L.

GoGo: ComfortCons, 2004-23