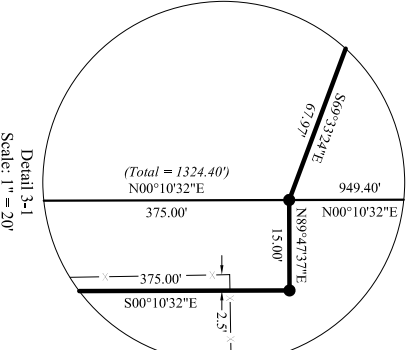
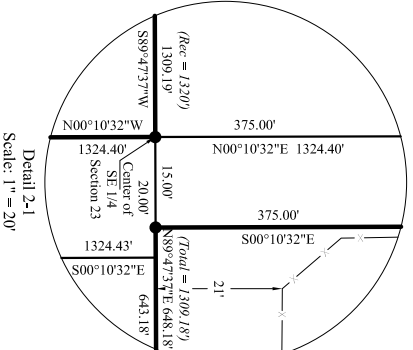
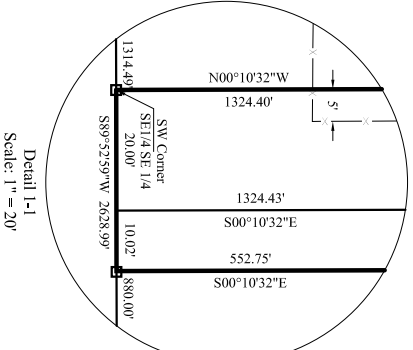
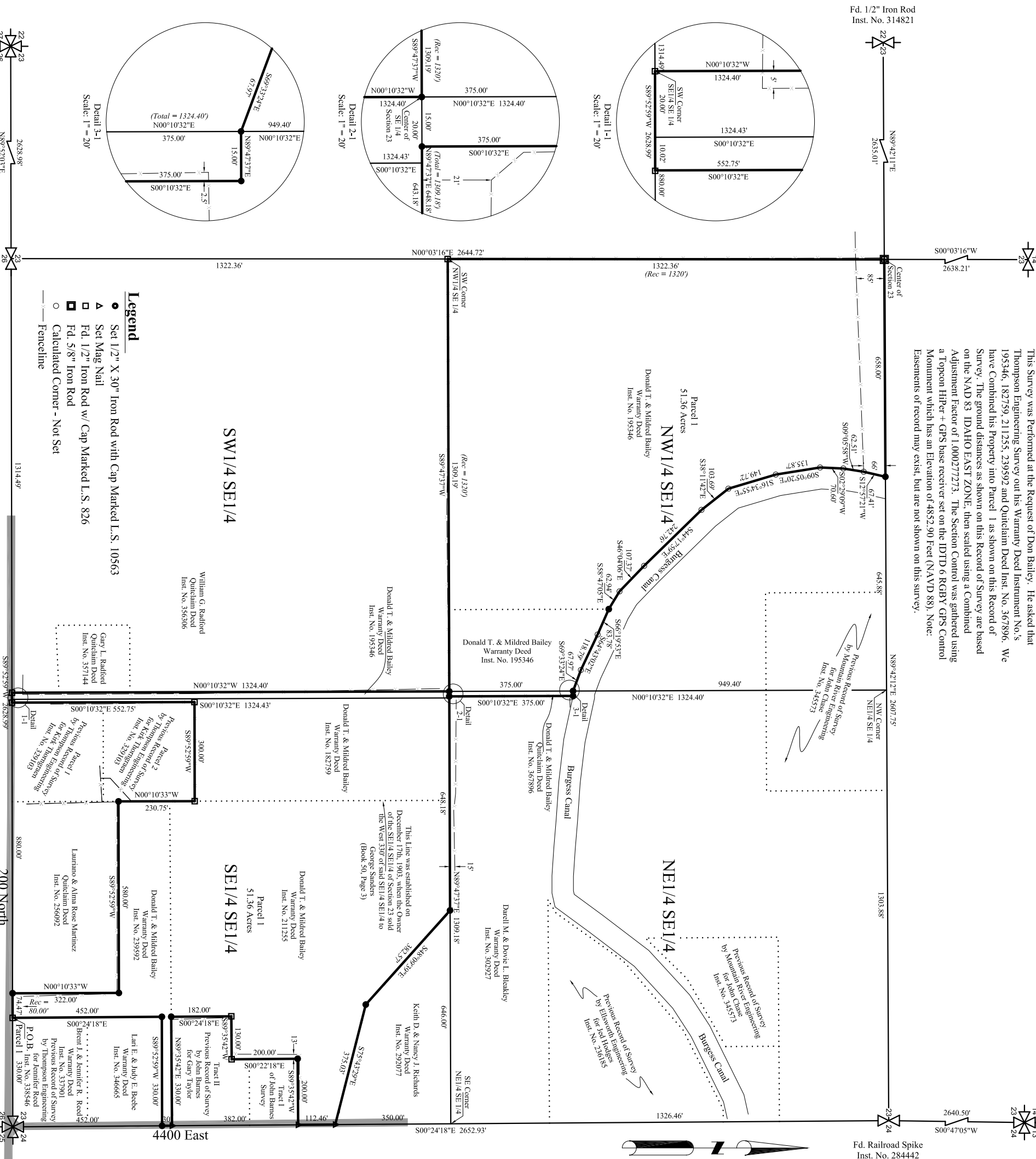


Narrative

This Survey was Performed at the Request of Don Bailey. He asked that Thompson Engineering Survey out his Warranty Deed Instrument No. 195346, 182759, 211255, 239592 and Quitclaim Deed Inst. No. 367896. We have Combined his Property into Parcel 1 as shown on this Record of Survey. The ground distances as shown on this Record of Survey are based on the NAD 83 IDAHO EAST ZONE, then scaled using a Combined Adjustment Factor of 1.000277273. The Section Control was gathered using a Topcon HiPer+ GPRS base receiver set on the IJTDI 6 RGBY GPRS Control Monument which has an Elevation of 4852.90 Feet (NAVD 88). Note: Easements of record may exist, but are not shown on this survey.

Fd. 1/2" Iron Rod
Inst. No. 314821

Fd. Railroad Spike
Inst. No. 284442



- Legend**
- Set 1/2" X 30" Iron Rod with Cap Marked L.S. 10563
 - ▲ Set Mag Nail
 - Fd. 1/2" Iron Rod w/ Cap Marked L.S. 826
 - Fd. 5/8" Iron Rod
 - Calculated Corner - Not Set
 - Fence/line

Fd. 5/8" Iron Rod
w/Al. Cap
Inst. No. 260081

Fd. 5/8" Iron Rod w/Al. Cap
Inst. No. 260082

Fd. Railroad Spike
Inst. No. 304996

Parcel 1
A Parcel of Land Situated in Jefferson County, State of Idaho, Township 4 North, Range 39 East of the Boise Meridian, Section 23, More Particularly Described as Follows: Beginning at the Southeast Corner of Section 23, Township 4 North, Range 39 East, B.M. Thence S89°52'59" W along the South line of Section 23 for a Distance of 330.00 Feet to the True Point of Beginning. Thence S89°52'59" W along said South line for a Distance of 74.47 Feet (Rec. = 807). Thence N00°10'33" W for a Distance of 322.00 Feet; Thence S89°52'59" W for a Distance of 580.00 Feet; Thence N00°10'33" W for a Distance of 230.75 Feet; Thence S89°52'59" W for a Distance of 300.00 Feet; Thence S00°10'32" E for a Distance of 552.75 Feet to a point on the South line of said Section 23; Thence S89°52'59" W for a Distance of 30.02 Feet to the Southwest Corner of the Southeast Quarter (SE1/4) of the Southwest Quarter (SE1/4) of said Section 23; Thence N00°10'32" W for a Distance of 1324.40 Feet to the Center of said Southeast Quarter (SE1/4); Thence S89°47'37" W for a Distance of 1309.19 Feet (Rec. = 1320') to the Southwest Corner of the Northwest Quarter (NW1/4) of said Southeast Quarter (SE1/4); Thence N00°03'16" E for a Distance of 1322.36 Feet to the Center of said Section 23; Thence N89°42'12" E along the North line of the Southeast Quarter (SE1/4) for a Distance of 658.00 Feet to a point on the Western Bank of the Burgess Canal; Thence S12°57'21" W along said Bank for a Distance of 67.41 Feet; Thence S09°05'58" W along said Bank for a Distance of 62.51 Feet; Thence S02°29'09" W along said Bank for a Distance of 70.60 Feet; Thence S09°05'20" E along said Bank for a Distance of 135.87 Feet; Thence S16°34'55" E along said Bank for a Distance of 149.72 Feet; Thence S38°11'42" E along said Bank for a Distance of 103.69 Feet; Thence S44°17'59" E along said Bank for a Distance of 242.76 Feet; Thence S46°04'06" E along said Bank for a Distance of 107.37 Feet; Thence S58°47'05" E along said Bank for a Distance of 62.94 Feet; Thence S66°19'53" E along said Bank for a Distance of 83.78 Feet; Thence S64°43'02" E along said Bank for a Distance of 118.79 Feet; Thence S69°35'42" E along said Bank for a Distance of 67.97 Feet; Thence N89°47'37" E along said Bank for a Distance of 15.00 Feet; Thence S00°10'32" E for a Distance of 375.00 Feet to a point on the North line of the Southeast Quarter (SE1/4) of the Southeast Quarter (SE1/4) of said Section 23; Thence N89°47'37" E along said North line for a Distance of 648.18 Feet more or less to an existing fence/line; Thence S48°09'39" E along said fence/line for a Distance of 382.57 Feet; Thence S75°43'29" E along said fence/line for a Distance of 375.03 Feet to a point on the East line of said Section 23; Thence S00°24'18" E along said East line for a Distance of 112.46 Feet; Thence S89°35'42" W for a Distance of 200.00 Feet; Thence S00°22'18" E for a Distance of 200.00 Feet; Thence S89°35'42" W for a Distance of 182.00 Feet; Thence S00°24'18" E for a Distance of 182.00 Feet; Thence N89°35'42" E for a Distance of 330.00 Feet to a point on the East line of said Section 23; Thence S00°24'18" E along said East line for a Distance of 30.00 Feet; Thence S89°52'59" W for a Distance of 452.00 Feet to the True Point of Beginning. Containing 51.36 Acres More or Less.

Subject to: Easements and Right-of-Ways for Highways, roads, ditches, canals, power poles, and transmission lines as they exist.

TE THOMPSON ENGINEERING, INC.
CONSULTING ENGINEERS
RIGBY, IDAHO 83442

RECORD OF SURVEY

LOCATED IN THE SE 1/4 OF SECTION 23, TOWNSHIP 4 NORTH, RANGE 39 EAST, JEFFERSON COUNTY, IDAHO